



*rubberpar*

The global rubber technical service



IRRIGATION CONSTRUCTION AGRICULTURE, S.L.

RUBBER ELASTOMERIC JOINTS

# EXPANSION JOINTS





---

Pol. Ind. Los Alberos. C/. Fco. Rivera Ordóñez, 17.  
41610 Paradas (Sevilla) España  
Tlf: +(34) 955 299 912  
e-mail: [administracion@paradasrubbers.es](mailto:administracion@paradasrubbers.es)  
[www.rubberpar.es](http://www.rubberpar.es)

## EXPANSION JOINTS



### 1. RUBBER ELASTOMERIC JOINTS

The reinforced elastomeric joint is a device which allows relative movements between two parts of a structure. To succeed, a joint must accomplish the following functions:

- Assure freedom of deck's movements.
- Provide continuity to the wearing course and be capable to support the traffic loads.
- Be able to avoid noise, impacts and vibrations.
- Have good sealing properties and allow good surface water evacuation.

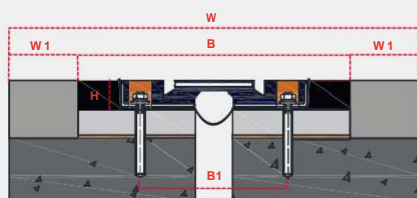
#### Description

The basic construction of these Reinforced Elastomeric Joints is molded chloroprene Rubber reinforced with steel. This elastomeric band is formulated to provide elasticity, strength and durability. Metal reinforcements made of steel are inside it, providing the stiffness and strength required to transfer traffic loads and avoid its bending when absorbing movements. The set is anchored to the structure by bolts. The steel anchoring bolts are fastened to the structure with epoxy resins and tightened by zinc washers and self-locking nuts. Once the mechanical fixing is placed, they are sealed in order to provide continuity to the wearing course.



**RUBBER  
ELASTOMERIC JOINTS**

## SC



### Specific features

- Multipurpose expansion Joints available for medium and high structural gaps. They ensure a high degree of reliability and robustness of the system.
- Suitable for light and heavy traffic.
- Easy installation and maintenance.

DESCRIPTION	SC-42	SC-52	SC70	SC-80
Weight Module (kg)	28.6	34	50	72.6
Movement	±21	±26	±35	±40
<b>B</b> Width	245	270	352	425
<b>H</b> Height	34	40	45	53
<b>G</b> Gap	35	50	70	86
Length	1830	1830	1830	1830
<b>W</b> Cutting Width (mm)	365	390	495	585
<b>W1</b> Transition strip (mm)	120	120	140	160
<b>B1</b> Distance between bolts. Horizontal (mm)	190	220	280	325
Distance between bolts. Longitudinal (mm)	305	305	305	305

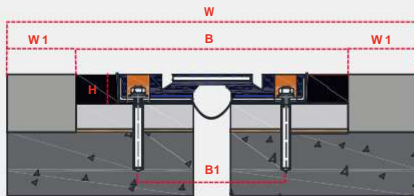
### ANCHOR SYSTEM

<b>M1</b> Ø Drill (mm)	16	16	18	20
<b>M</b> Bolt	M14	M14	M16	M18
<b>Wh</b> Washer	35x45x3 Ø16	35x45x3 Ø16	35x55x4 Ø18	50x70x5 Ø20
<b>P</b> Depth (mm)	200	200	200	200
Torque (N.m)	60	60	90	120

DESCRIPTION	SC100	SC-130	SC-160	SC-230	SC-330
Weight Module (kg)	125.4	134	209.4	304.4	334
Movement	±50	±65	±80	±115	±165
<b>B</b> Width	580	580	715	890	1195
<b>H</b> Height	56	56	75	93	128
<b>G</b> Gap	100	120	140	160	200
Length	1830	1830	1830	1830	1220
<b>W</b> Cutting Width (mm)	740	740	895	1090	1420
<b>W1</b> Transition strip (mm)	160	160	180	200	200
<b>B1</b> Distance between bolts. Horizontal (mm)	500	500	619	787	1080
Distance between bolts. Longitudinal (mm)	305	305	305	305	305

### ANCHOR SYSTEM

<b>M1</b> Ø Drill (mm)	20	20	22	24	26
<b>M</b> Bolt	M18	M18	M 20	M 22	M24
<b>Wh</b> Washer	50x70x5 Ø22	45x60x4 Ø20	50x70x5 Ø22	51x71x6 Ø24	60x70x6 Ø26
<b>P</b> Depth (mm)	200	200	200	200	200
Torque (N.m)	120	120	140	160	200



### Specific features

- Multipurpose expansion Joints available for medium and small structural gaps Suitable for light and medium traffic.
- Easy installation and maintenance.
- Cost-saving solution.

DESCRIPTION	RP-50	RP-80	RP-110	RP-140	RP-180
Weight Module (kg)	29.4	41.4	61	84	115
Movement	±25	±40	±55	±70	±90
<b>B</b> Width	240	274	356	432	470
<b>H</b> Height	35	40	46	54	66
<b>G</b> Gap	40	55	70	85	106
Length	1830	1830	1830	1830	1830
<b>W</b> Cutting Width (mm)	360	394	496	592	650
<b>W1</b> Transition strip (mm)	120	120	140	160	180
<b>B1</b> Distance between bolts. Horizontal (mm)	190	220	279	342	390
Distance between bolts. Longitudinal (mm)	305	305	305	305	305

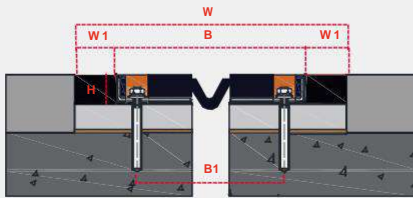
### ANCHOR SYSTEM

<b>M1</b> Ø Drill (mm)	16	16	18	20	22
<b>M</b> Bolt	M14	M14	M16	M18	M20
<b>Wh</b> Washer	35x45x3 Ø16	35x45x3 Ø16	35x55x4 Ø18	45X60x4 Ø20	45X60x4 Ø20
<b>P</b> Depth (mm)	200	200	200	200	200
Torque (N.m)	60	60	90	120	140

DESCRIPTION	RP-210	RP-270	RP-380
Weight Module (kg)	209	270	334
Movement	±105	±135	±190
<b>B</b> Width	712	888	1195
<b>H</b> Height	74	76	128
<b>G</b> Gap	140	170	250
Length	1830	1830	1220
<b>W</b> Cutting Width (mm)	895	1090	1420
<b>W1</b> Transition strip (mm)	180	200	200
<b>B1</b> Distance between bolts. Horizontal (mm)	612	798	1080
Distance between bolts. Longitudinal (mm)	305	305	305

### ANCHOR SYSTEM

<b>M1</b> Ø Drill (mm)	22	22	26
<b>M</b> Bolt	M20	M20	M24
<b>Wh</b> Washer	50X70X5 Ø22	51x71x6 Ø24	60x70x6 Ø26
<b>P</b> Depth (mm)	200	170	200
Torque (N.m)	140	140	200



### Specific features

- Multipurpose expansion Joints available for medium and small structural gaps Suitable for light and medium traffic.
- Easy installation and maintenance.
- Cost-saving solution.

DESCRIPTION	SC-50	SC-75
Weight Module (kg) Movement	16.50	18.50
Width	±25	±37.5
<b>B</b> Height	210	225
<b>H</b> Gap	33	35
<b>G</b> Length	43	55
Cutting Width (mm)	1750	1830
<b>W</b> Cutting Width (mm)	330	345
<b>W1</b> Transition strip (mm)	120	120
<b>B1</b> Distance between bolts. Horizontal (mm)	150	145
Distance between bolts. Longitudinal (mm)	305	305
<b>ANCHOR SYSTEM</b>		
<b>M1</b> Ø Drill (mm)	16	16
<b>M</b> Bolt	M14	M14
<b>Wh</b> Washer	30x45x3 Ø15	30x45x3 Ø15
<b>P</b> Depth (mm)	200	200
Torque (N.m)	60	60

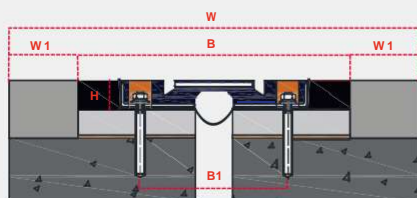
Each model has been carefully designed to withstand extreme working conditions. Each joint module has been subjected to long compression and expansion cycles, measuring the tension required to compress or expand the values for which each joint is designed.



# SCA

## Specific features

- Multipurpose expansion Joints available for medium and small structural gaps Suitable for light and medium traffic.
- Easy installation and maintenance.
- Cost-saving solution.



DESCRIPTION	SCA-55	SCA-72	SCA-105	SCA-140
Weight Module (kg) Movement	28.6	34	72.6	125.4
Width	55 / 34 / 21	72 / 46 / 26	105 / 65 / 40	140 / 85 / 55
<b>B</b> Height	245	270	425	580
<b>H</b> Gap	35	40	53	56
<b>G</b> Length	30	40	70	90
Cutting Width (mm)	1830	1830	1830	1830
<b>W</b> Cutting Width (mm)	365	390	585	740
<b>W1</b> Transition strip (mm)	120	120	160	160
<b>B1</b> Distancia entre Pernos Horizontal (mm)	190	220	325	500
Distance between bolts. Longitudinal (mm)	305	305	305	305

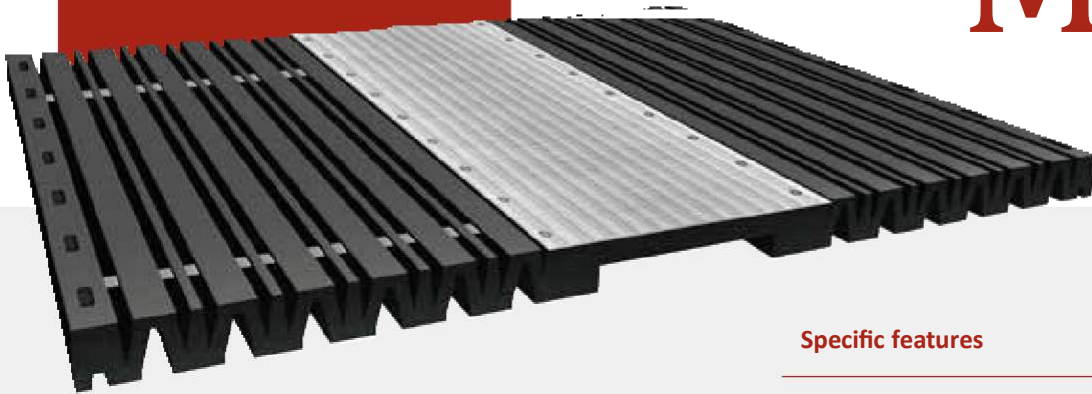
### ANCHOR SYSTEM

<b>M1</b> Ø Drill (mm)	16	16	18	20
<b>M</b> Bolt	M14	M14	M16	M18
<b>Wh</b> Washer	35x45x3 Ø16	35x45x3 Ø16	35x55x3.5 Ø18	50x70x5.0 Ø20
<b>P</b> Depth (mm)	200	200	200	200
Torque (N.m)	60	60	90	120

DESCRIPTION	SCA-180	SCA-280	SCA-380
Weight Module (kg) Movement	209.4	304.4	334
Width	180 / 95 / 85	280 / 155 / 125	380 / 200 / 180
<b>B</b> Height	715	890	1195
<b>H</b> Gap	75	93	128
<b>G</b> Length	100	130	180
Cutting Width (mm)	1830	1830	1220
<b>W</b> Cutting Width (mm)	895	1090	1420
<b>W1</b> Transition strip (mm)	180	200	200
<b>B1</b> Distance between bolts. Horizontal (mm)	619	787	1080
Distance between bolts. Longitudinal (mm)	305	305	305

### ANCHOR SYSTEM

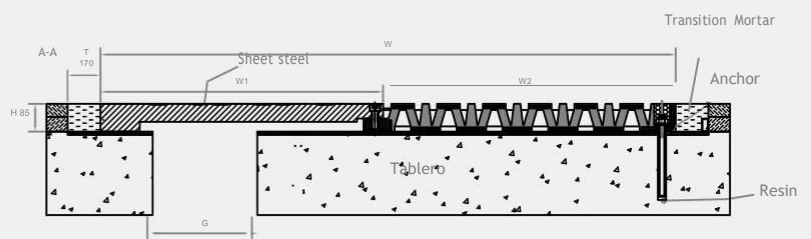
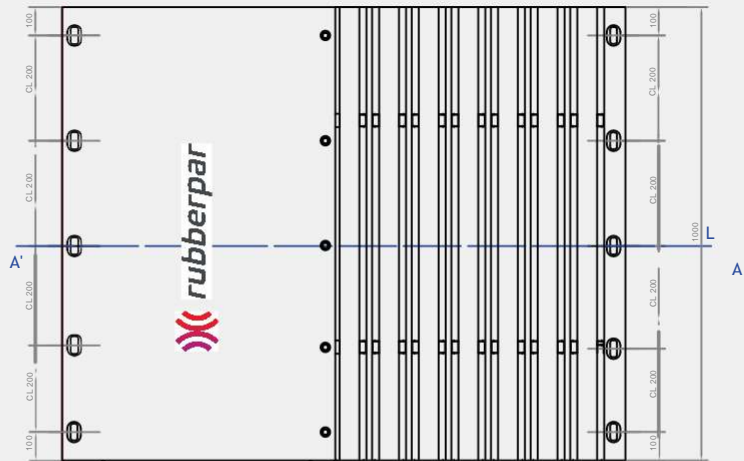
<b>M1</b> Ø Drill (mm)	22	24	26
<b>M</b> Bolt	M 20	M 22	M24
<b>Wh</b> Washer	50x70x5.0 Ø22	51x71x6.0 Ø24	60x70x6.0 Ø26
<b>P</b> Depth (mm)	200	200	200
Torque (N.m)	140	160	200



**Specific features**

- Extra long movements.
- Extra long structural gaps.
- The steel plate can be galvanized or covered by vulcanization.
- Easy installation compared to other devices.
- Seismic protection available.

By combining the different parts (bellows and steel plates) we can produce symmetrical and asymmetric expansion joints with the requested movements.

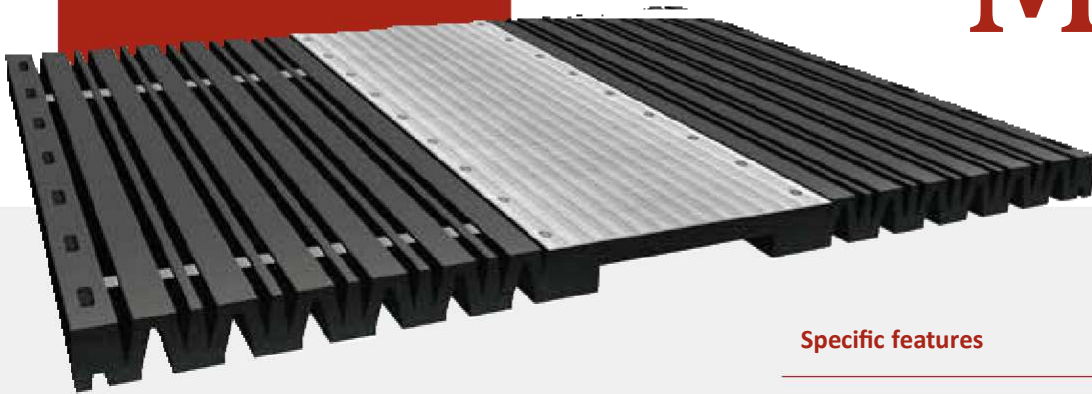


**DESCRIPTION**

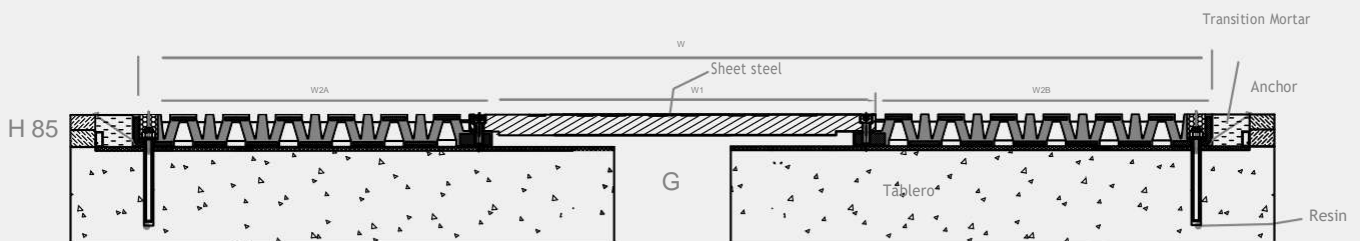
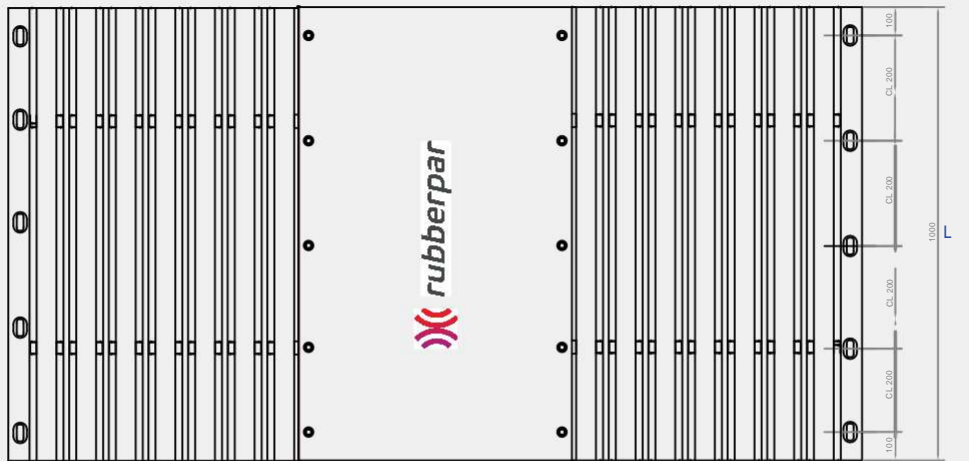
MOD	Recurr. (mm)	L	H	W	W1	W2	Weight (kg)	CL	G	T	Mxb	Da
<b>MSC-400</b>	400 ( ± 200 )	1000	85	1300	680	675	308	200	220	170	M20X200	22
<b>MSC-500</b>	500 ( ± 250 )	1000	85	1540	780	815	386	200	270	170	M20X200	22
<b>MSC-600</b>	600 ( ± 300 )	1000	85	1780	880	955	465	200	320	170	M20X200	22
<b>MSC-700</b>	700 ( ± 350 )	1000	85	2020	980	1095	500	200	370	170	M20X200	22
<b>MSC-800</b>	800 ( ± 400 )	1000	85	2260	1080	1235	795	200	420	170	M20X200	22

Each model has been carefully designed to withstand extreme working conditions. Each joint module has been subjected to long compression and expansion cycles, measuring the tension required to compress or expand the values for which each joint is designed.





**Specific features**



**DESCRIPTION**

MOD	Recorr. (mm)	L	H	W	W1	W2A	W2B	Weight (kg)	CL	G	T	Mxb	Da
<b>MSC-1000</b>	± 00	1000	85	2700	1190	815	815	801	200	520	170	M20X200	22
<b>MSC-1200</b>	± 600	1000	85	3180	1390	955	955	1038	200	620	170	M20X200	22
<b>MSC-1400</b>	± 700	1000	85	3660	1490	1095	1095	1257	200	720	170	M20X200	22
<b>MSC-1600</b>	± 800	1000	85	4140	1790	1235	1235	1488	200	820	170	M20X200	22

Each model has been carefully designed to withstand extreme working conditions. Each joint module has been subjected to long compression and expansion cycles, measuring the tension required to compress or expand the values for which each joint is designed.

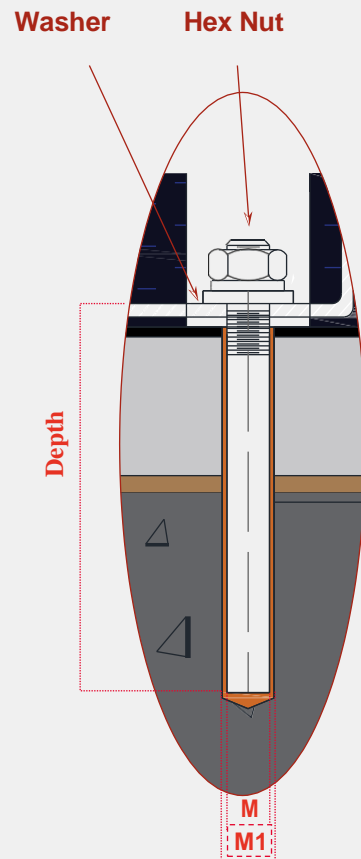
DESCRIPTION	RP-50	RP-80	RP-110	RP-140	RP-180
<b>M1</b> Ø Drill (mm)	16	16	18	20	22
<b>M</b> Bolt	M14	M14	M16	M18	M20
<b>D</b> Depth (mm)	200	200	200	200	200

DESCRIPTION	SC-42	SC-52	SC-70	SC-80
<b>M1</b> Ø Drill (mm)	16	16	18	20
<b>M</b> Bolt	M14	M14	M16	M18
<b>D</b> Depth (mm)	200	200	200	200

DESCRIPTION	RP-210	RP-270	RP-380
<b>M1</b> Ø Drill (mm)	22	24	26
<b>M</b> Bolt	M20	M22	M24
<b>D</b> Depth (mm)	200	200	200

DESCRIPTION	SC-100	SC-130	SC-160	SC-230	SC-330
<b>M1</b> Ø Drill (mm)	20	20	22	24	26
<b>M</b> Bolt	M18	M18	M20	M22	M24
<b>D</b> Depth (mm)	200	200	200	200	200

DESCRIPTION	SC-50	SC-75
<b>M1</b> Ø Drill (mm)	16	16
<b>M</b> Bolt	M14	M14
<b>D</b> Depth (mm)	200	200



## NOTE

---

Pol. Ind. Los Alberos, C/. Fco. Rivera Ordóñez, 17.  
41610 Paradas (Sevilla) España  
Tlf: +(34) 955 299 912  
e-mail: [administracion@paradasrubbers.es](mailto:administracion@paradasrubbers.es)  
[www.rubberpar.es](http://www.rubberpar.es)



IRRIGATION CONSTRUCTION AGRICULTUREI, SL

Avda. San Pablo, 31. Nave 23 Inferior

28823.- COSLADA (MADRID)

Tel: +(34)916216488 , +(34)606535467

Email: [info@icaslexport.com](mailto:info@icaslexport.com)

[www.icaslexport.com](http://www.icaslexport.com)



BURJ AL - EMAAR CO.

Iraq - Baghdad - ALharthia

Tel: Baghdad: 07738412818

Samawah: 07738412819 , 07821657176

Najf: 07738412804

Email: [info@burjalemaar.co](mailto:info@burjalemaar.co)

[www.burjalemaar.co](http://www.burjalemaar.co)



GENERAL TRADING

UR INTERNATIONAL GENERAL TRADING

Office no.603, Sobha Ivory 2 , Alasayel street , Bussinus bay, Dubai

Tel: +971 544217575

Email: [info@uritrading.com](mailto:info@uritrading.com) , [Director@uritrading.com](mailto:Director@uritrading.com)

[www.uritrading.com](http://www.uritrading.com)



ALASWAR LOJİSTİK İÇ VE DİŞ

KEMALPASA MAH ORDU CAD.

SAK İS HANI BLOK NO : 54 İÇ KAPI NO : 2 FATİH / İSTANBİL

Tel: +90 5315855908

Email: [alaswar.istanbul@hotmail.com](mailto:alaswar.istanbul@hotmail.com)



The global rubber technical service

Pol. Ind. Los Alberos, C/. Fco. Rivera Ordonez, 17.

41610 Paradas (sevilla) Espana

[www.rubberpar.es](http://www.rubberpar.es)